

Advantages for the Farmer

- reducing the period between calving
- controlling heat in heifers by analysing blood
- minimising natural abortions caused by irregular reproductive cycles
- cost reduction by early identification of cysts
- determination of false heat (false oestrus)
- exact determination of the stage of the oestrous cycle (open versus pregnant)
- time and effort: 1 minute

The **eProCheck** unit is an investment into the long-term success of your business:

- your exact knowledge of the reproductive cycles of your dairy cattle is cash money
- Losses are avoided by correct interpretation of the stage of cycle
- Correct understanding enables correct timing for optimal embryo transfer



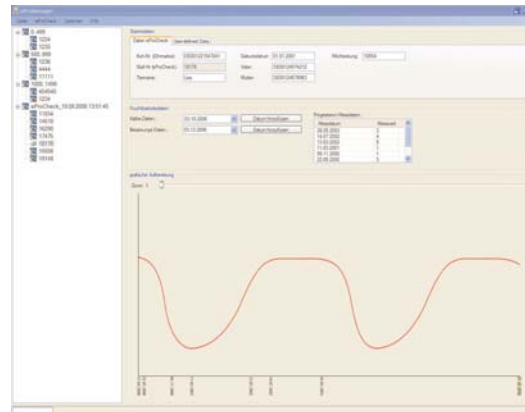
Overview of Products



device for analysing the progesterone level



for monitoring the fertility cycle



Weidenweg 1 · 86869 Oberostendorf/Lengenfeld
Tel.: 0 82 43/96 05 03 · Fax: 0 82 43/96 86 01
E-Mail: info@frimtec.de · www.frimtec.de



**Automated Progesterone Test
for improved, successful
Fertility Management**

cost reduction by increased
fertility ratio

Simple – Safe – Efficient

www.frimtec.de

Cost Reduction via Increased Fertility Rate

eProCheck represents - worldwide - the first device for an automatic determination of the progesterone level by analysing bovine blood or milk.

The increase in milk production per dairy cow is globally accompanied by a decline in reproduction. Short periods between calving are an essential condition for a profitable milk production. Uncontrolled longer periods cause loss of milk, of money and of time. **eProCheck** is an important means to improve breeding efficiency and/or discover fertility disturbances at an early stage.

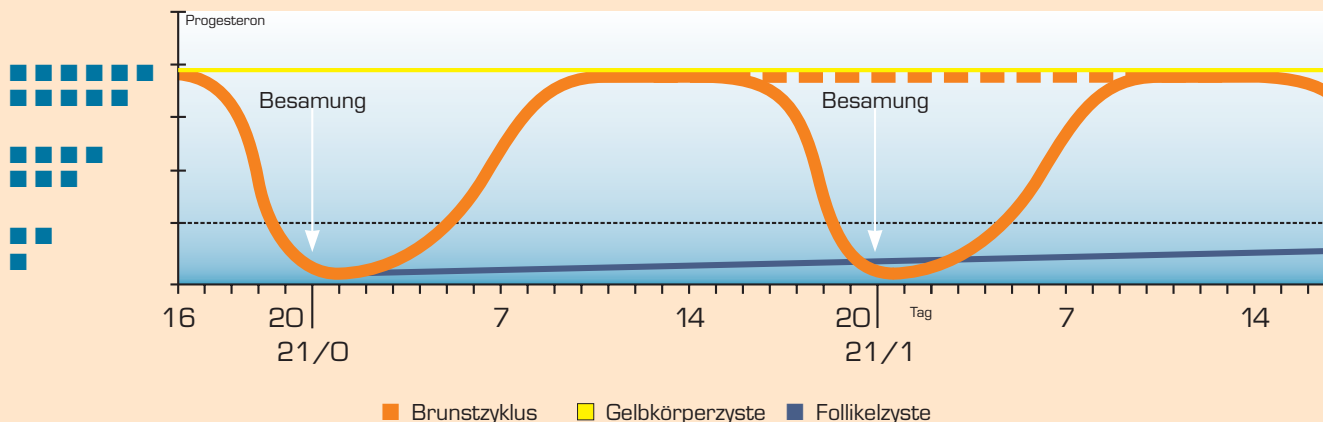


By the use of **eProCheck** the fertility rate of the herd may be improved by raising the reproduction ratio of the individual cow. Thus the costs for up-keeping the live stock are lowered.

Possibilities to use **eProCheck**

- identification of stage of heat
- reliable disclosure of non-pregnant cows after day 19 of cycle
- Determining and ascertaining the time of ovulation
- accurate determination of the course of cycle against appearance (false oestrus, quiet oestrus)
- early disclosure of follicle cysts and CL cysts
- systematic treatment with prostaglandin (controlling the CL)
- synchronising the transfer of embryos

Knowledge gained by performing a test with **eProCheck**



For a test with **eProCheck** all you need are 4 drops of milk + 1 minute of time.

